



SUPER SAVINGS



GRID INTERACTIVE INVERTERS

**EXPERT KO BULAO,
APNI BIJLI BANAO.**



ABOUT LIVGUARD

Livguard Energy Technologies Pvt. Ltd. (LETPL), one of India's leading providers for power energy solutions is poised to transform the world with its cutting edge technology in solar solutions, power back-up, automotive solutions & e-rickshaw batteries. Livguard was founded in the year 2014 and is a part of the SAR Group which has been serving the nation for the past three decades. With our technologically advanced toolkit and trained technicians, we have achieved the customer's trust and faith in our products and services. This has helped us reach the 4,000 crore company milestone in a short period of time.



GRID INTERACTIVE INVERTER (GI)

Product Description

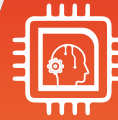
G3 series of Grid Interactive (GI) Inverters are compatible with new age Mono PERC half Cut Solar Panels upto 580Wp. With an attractive design and powerful features, this inverter comes with best in class warranty.

Application

Homes and establishments that need to reduce their electricity bills.



Wide Operating
Voltage Range



Smart remote
Monitoring Included with
LivMonitor 360



Low self consumption
at night <1W



Compact design,
light in weight

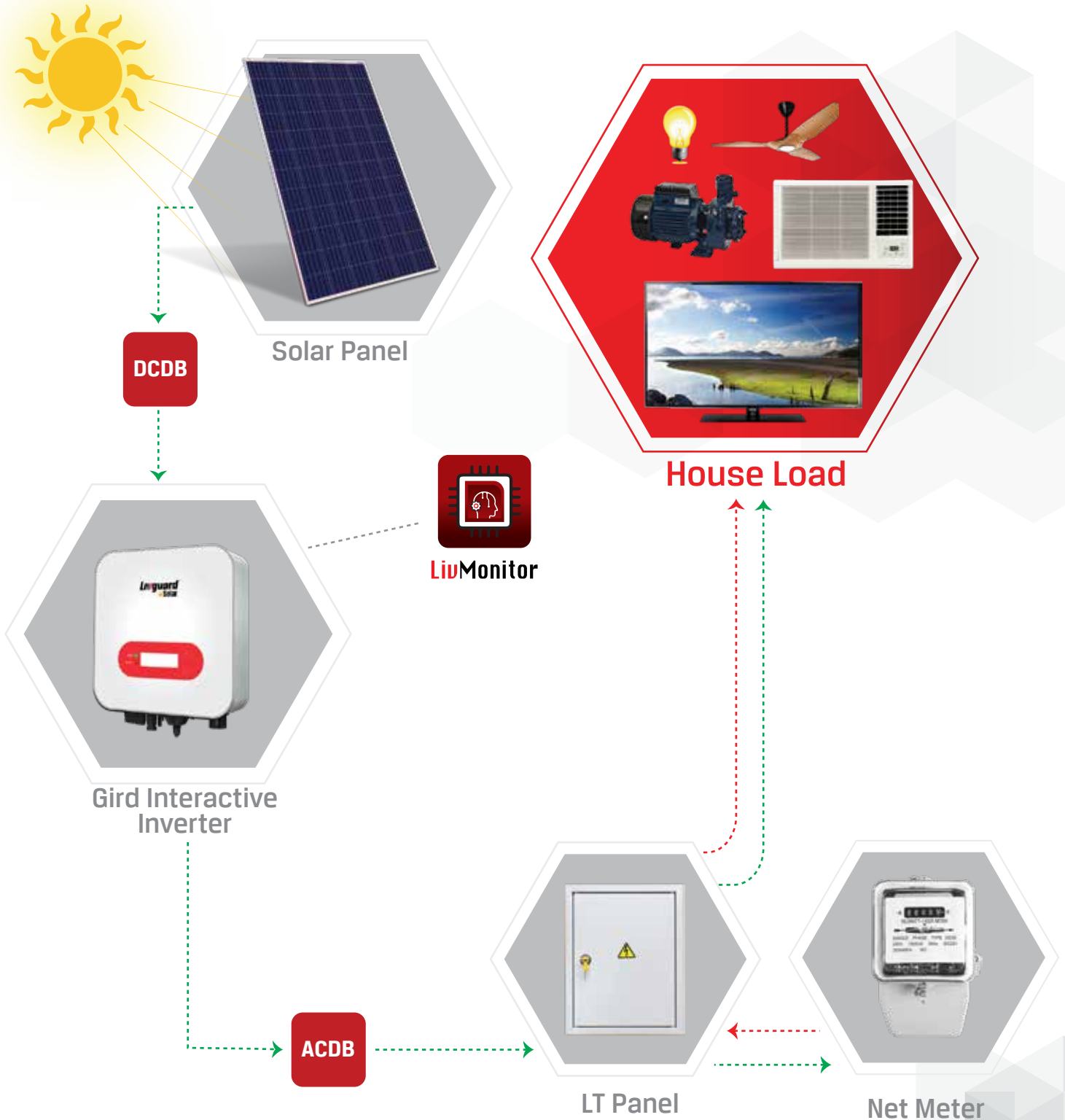


15A Isc to accommodate
high rating panels.

10 YEAR
PRODUCT
WARRANTY



GRID INTERACTIVE INVERTER (GI)



SPECIFICATION

IG Nomenclature	LS1036IS	LS1056I-G3
Input (DC)		
Recommended Max. PV Input Power	4100Wp	7500Wp
Max. Input Voltage	550V	600V
Number of MPPT/String per MPPT	1/1	2/1
Start-up Input Voltage	70V	60V
Rated Input Voltage	360V	
MPPT Operating Voltage Range	50-550V	50-570V
Full Power MPPT Voltage Range	275-500V	250-520V
Max. Input MPPT current	12Ax1	12.5Ax2
Max. DC Input Short-circuit Current per MPPT	15Ax1	15Ax2
Output(AC)		
Rated Power	3000W	5000W
Max. AC Power	3000VA	5000VA
Max. Output Current	14.5A	24.1A
Nominal Grid Voltage	L/N/PE, 220VAC 230VAC 240VAC	
Grid Voltage Range	180-276VAC	
Nominal Frequency	50/60 Hz	
Grid Frequency Range	45-55Hz/54-66Hz	
THDi	<3%	
Power Factor	1 Default (+/- 0.8 Adjustable)	
Efficiency		
MPPT Efficiency	>99.9%	
Self-consumption at Night	< 1W	
Max. Efficiency	97.7%	98.0%
Protection		
DC Reverse Polarity Protection	Yes	
Safety Protection	Anti-Islanding protection DC reverse polarity protection Over temp protection Leakage current protection Over voltage protection Over current protection Earth fault protection	
SPD	MOV: Type III Standard	
Communication		
Standard Communication Mode	RS485, WiFi/GPRS (optional)	
General Data		
Topology	Transformerless	
Ambient Temperature Range	-30°C to 60°C	
Permissible Relative Humidity Range	0-100%	
Noise	<25dB	
DC Switch	Optional	
Cooling	Natural Convection	
Max. Operating Altitude	2000m	4000m
Dimension	321x260.5x131.5mm	345*341*167mm
Support bracket	Wall-mounted	
Weight	6.3Kg	10Kg
Display	LCD+LED	LCD
Degree of Protection	IP65	
Warranty	10 Years	
Standards Data		
EMC	EN 61000-6-1, EN 61000-6-3, EN 61000-3-2, EN 61000-3-3	EN 61000-6-2, EN 61000-6-3, EN 61000-3-2, EN 61000-3-3, EN 61000-3-11, EN 61000-3-12
Safety standards	IEC 62116, IEC 61727, IEC 61683, IEC 60068(1,2,14,30), IEC 62109-1/2	IEC62109-1/2, IEC62116, IEC61727, IEC-61683, IEC60068(1,2,14,30)
Grid standards	AS 4777, DE V 124-1 0 V 0 0 , VDE V 0126-1-1, VDE-AR-N 4105, G83/2, C10/11, RD 1699	VDE-AR-N 4105, VDE V 0126-1-1, V 0124-100, AS/NZS 4777, CEI 0-21, G98/G99, C10/11, EN 50549, RD 1699

NOTE: Specifications included in this datasheet are subject to change without notice.

SPECIFICATION

Parameters	LS305GI - G3	LS308GI - G3	LS310GI - G3	LS315GI - G3	LS320GI - G3	LS324GI - G3
Input (DC)						
Max. Recommended PV Input Power	7500W	12000W	15000W	22500W	30000W	36000W
Start-up Input Voltage	160V					
Number of MPPTs	2					
MPPT Voltage Range	140-1000V					
Input Range with Full Power Operation with 2 MPPTs Parallel	240-850V	380-850V	420-850V		480-850V	540-850V
Max. Input Current	13A/13A			26A/26A		
Input Short-circuit Current for each MPPT	18A/18A			36A/36A		
Output (AC)						
Nominal Output Power	5000W	8000W	10000W	15000W	20000W	24000W
Max. Output Power	5500VA	8800VA	11000VA	16500VA	22000VA	26400VA
Max. Output Current	8A	12.8A	15.9A	23.9A	31.9A	38.3A
Nominal Grid Frequency	50/60Hz					
THD/THDi	< 3 %					
Efficiency, Safety and Protection						
Max. Efficiency	98.4%	98.5%	98.5%	98.6%		
Euro Efficiency	97.5%	98.0%	98.0%	98.2%		
MPPT Adaptation Efficiency	> 99.9%					
Self-consumption at Night	< 1 W					
Communication	RS485, WiFi/GPRS (optional)					
DC Switch	Yes					
DC Reverse Polarity Protection	Yes					
Input / output SPD	PV: type II standard, AC: type II standard					
Other Protections	Anti-islanding protection, Leakage current protection, Ground fault monitoring, PV-array string fault monitoring					
General Data						
Ambient Temperature	(-)30°C to +60°C					
Cooling	Natural				Fan	
Display	LCD&Bluetooth +APP					
Dimension	513*425*169mm					
Weight	17Kg	18Kg	18Kg	20Kg	22Kg	23Kg
Noise	< 40 dB					
Ingress Protection	IP 65					
Warranty	10 Years					
EMC	EN 61000-6-1, EN 61000-6-2, EN 61000-6-3, EN 61000-6-4					
Grid Standard	AS/NZS 4777, VDE V 0124-100, V 0126-1-1, VDE-AR-N 4105, CEI 0-21/CEI 0-16, UNE 206 007-1, EN50549, G98/G99, EN50530, NB/T32004					
Safety Standard	IEC62109-1/2, IEC62116, IEC61727, IEC61683, IEC60068(1,2,14,30)					

NOTE: Specifications included in this datasheet are subject to change without notice.

ZERO EXPORT DEVICE

About Product

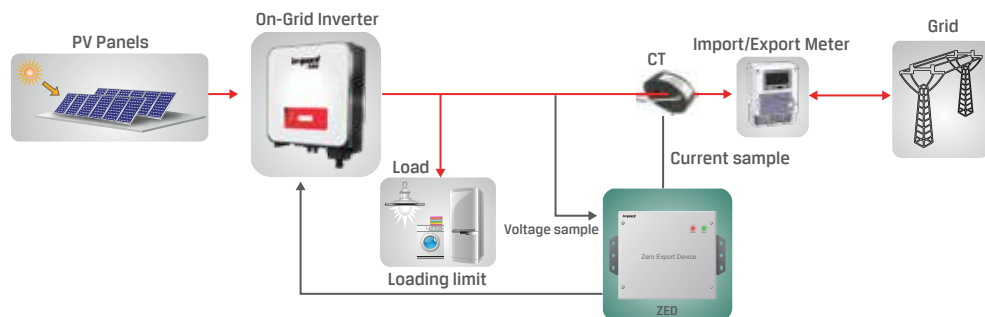
The device helps PV plants to function without net metering.

Also useful for establishments that have DG Sets wherein the solar power is not exported to the DG set.

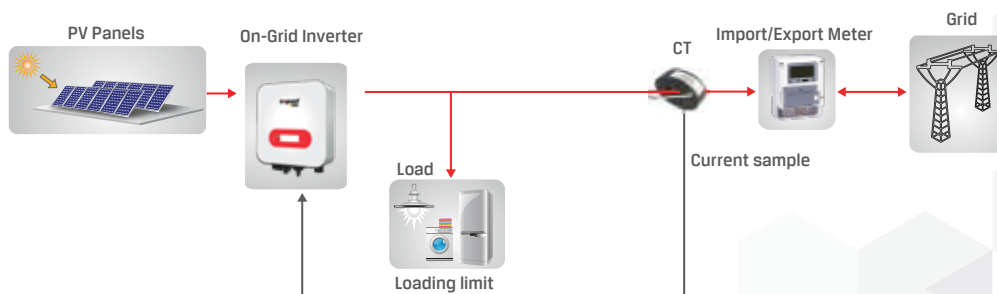
SPECIFICATIONS	
Parameters	Values
Rated Supply Voltage	230 VAC
Power Consumption	< 3 W
Protection Class	IP30
Solar PV kW Compatibility	Up to 1.5 MW
Power Phase Connectivity	Single, Three
L1-N, L2-N, L3-N	90 - 270 Vrms
Input	0 - 1 A
Rated Frequency	50/60 Hz
Frequency Range	45 - 65 Hz
Response Time	1 s
Sampling Rate per Channel (x 10 Channels)	300 per Half Cycle
Switching Elements Max Current/Voltage	2 A/250 VAC, 2 A/220 VDC
Power to Unit	Green LED
Grid Available	Green LED
Generation Available	Red LED
Operation Temperature	-25°C to 60°C
Dimensions (WxHxD)	200 x 180 x 55

NOTE: Specifications included in this datasheet are subject to change without notice.

3 Phase



1 Phase








LivguardTM Solar



+91-7428191000
18001025551



 @LivguardEnergy  Livguard Energy  @livguardenergy  @LivguardEnergy  Livguard

Livguard Energy Technologies Private Limited
Plot no. 221, Udyog Vihar Phase-I, Gurgaon-122016, Haryana, India.
www.livguard.com