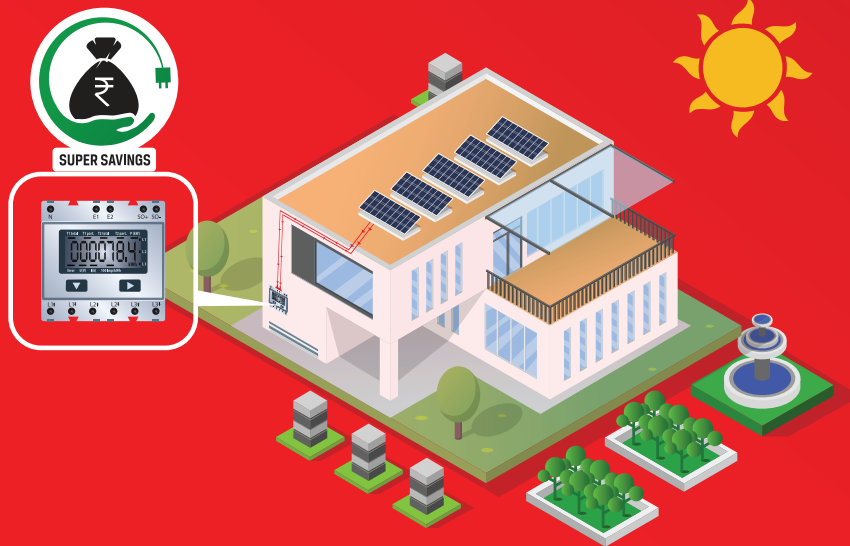


# APNI BIJLI BANAO, EXPERT KO BULAO.

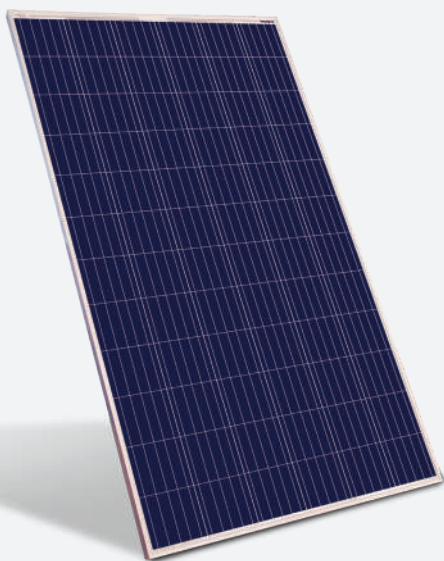
SOLAR KE SMART SOLUTIONS GHAR LE AAO!

Call: +91 9999 039 039



## ABOUT LIVGUARD

Livguard Energy Technologies Pvt. Ltd. (LETPL) one of India's leading providers for power energy solutions is poised to transform the world with its cutting edge technology, in solar solutions, power back-up, automotive solutions, & e-rickshaw batteries. Livguard was founded in the year 2014 and is a part of the SAR Group which has been serving the nation for the past three decades. With our technologically advanced toolkit and trained technicians we have achieved the customer's trust and faith in our products and services. This has helped us reach the 4,000 crore company milestone in a short period of time.



# SOLAR PANEL

Livguard Solar Panels are available in Poly-crystalline and Mono PERC PV cells, with IEC compliance ranging for 40Wp - 535Wp panels. Our Panels are ideally suited for rooftop and agricultural applications.

**12\*** Years Product Warranty

**25** Years Performance Warranty

## Positive Power Tolerance

- Ensures full energy harvesting
- Ensures better return on investment



## Excellent Performance in low light

- High quality transparent glass
- Glossy EVA to capture maximum solar energy



## Suitable for Extreme Weather

- Tempered glass withstands dynamic wind load of 2400 Pa & snow load of 5400 Pa
- Multi EVA capsulation



## Potential-Induced Degradation (PID) Resistance Technology

- For longer life and lower degradation

MODULE 12V

Model Name	LGV12V40	LGV12V50	LGV12V75	LGV12V100	LGV12VS150	LGV12V180M
Power (pm) in Watts (Nominal)	40	50	75	100	150	180
No. of Cells	36	36	36	36	32	32
Rated Module Voltage	12	12	12	12	12	12
Voltage at Maximum Power (Vmp) in Volts	17.5	18	18	18	16.9	18.01
Current at Maximum Power (Imp) in Amps	2.46	2.78	4.17	5.66	8.9	9.99
Open Circuit Voltage (Voc) in Volts	21	22	22	22	21.6	22.12
Short Circuit Current (Isc) in Amps	2.54	3.28	4.67	6.06	9.2	10.37
Maximum System Voltage (V <sub>bc</sub> )	600	600	600	600	1000	1000
Module Efficiency $\eta$ (%)	>12%	>12%	>14%	>14%	>16%	>18%
STC: Irradiance 1000W/M², Ambient Temperature 25°C, Air Mass 1.5, Measuring Tolerance $\pm$ 3%						

MODULE 24V

Model Name	LGV24V330	LGV24V335	LGV24V400M	LGV24V450M	LGV24VS535M
Power (pm) in Watts (Nominal)	330	335	400	450	535
No. of Cells	72	72	72	144	144
Rated Module Voltage	24	24	24	24	24
Voltage at Maximum Power (Vmp) in Volts	38.0	38.3	41.2	41.6	41.43
Current at Maximum Power (Imp) in Amps	8.7	8.75	9.72	10.82	12.92
Open Circuit Voltage (Voc) in Volts	46.3	46.5	49.79	49.0	49.47
Short Circuit Current (Isc) in Amps	9.24	9.35	10.31	11.77	13.81
Maximum System Voltage (V <sub>bc</sub> )	1000	1000	1500	1500	1500
Module Efficiency $\eta$ (%)	>17%	>17%	>20%	>20%	>21%
STC: Irradiance 1000W/M², Ambient Temperature 25°C, Air Mass 1.5, Measuring Tolerance $\pm$ 3%					

WARRANTY & CERTIFICATION

Product Warranty*	5 years for 12V Modules; 12 Years for 24V Modules
Performance Warranty*	25 Years (90% module efficiency after 10 years, 80% module efficiency after 25 years)
Certificates	IS:14286, IS-61215, IS-61730

\*Refer solar module warranty card document  
Technical Parameters are subject to change without any prior notice

# LIVSERV SERVICE NETWORK

NOW SERVING COUNTLESS STATES ACROSS THE COUNTRY





**380+**  
Trained Service Engineers



### **On-Site\* Service Facility**

- ◆ Solar Panel, UPS, PCU, SCC & SMU: Customer End
- ◆ Battery: CSC location

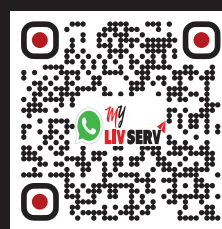


**50+** Service centre locations Pan India



**18001025551**  
[livserv@sar-group.com](mailto:livserv@sar-group.com)

# Livguard<sup>TM</sup> Solar



@LivguardEnergy



Livguard Energy



@livguardenergy



@LivguardEnergy



Livguard

Livguard Energy Technologies Private Limited  
Plot no. 221, Udyog Vihar Phase-I,  
Gurgaon-122016, Haryana, India.  
[www.livguard.com](http://www.livguard.com)